



# English Centres

British Council Accredited English Courses  
in London and Eastbourne.



# The Twin Experience

Creating lifelong memories with  
rewarding tuition and exciting  
social experiences

---

If you are thinking of travelling to the UK to study English, you want to be sure that you're attending a school which offers the best course options and services. At Twin, we have more than 20 years' experience in providing life-enhancing educational travel programmes for students from all around the world. You can rely on us for our knowledge and expertise, to help you choose the best course and provide the best possible experience in the UK.

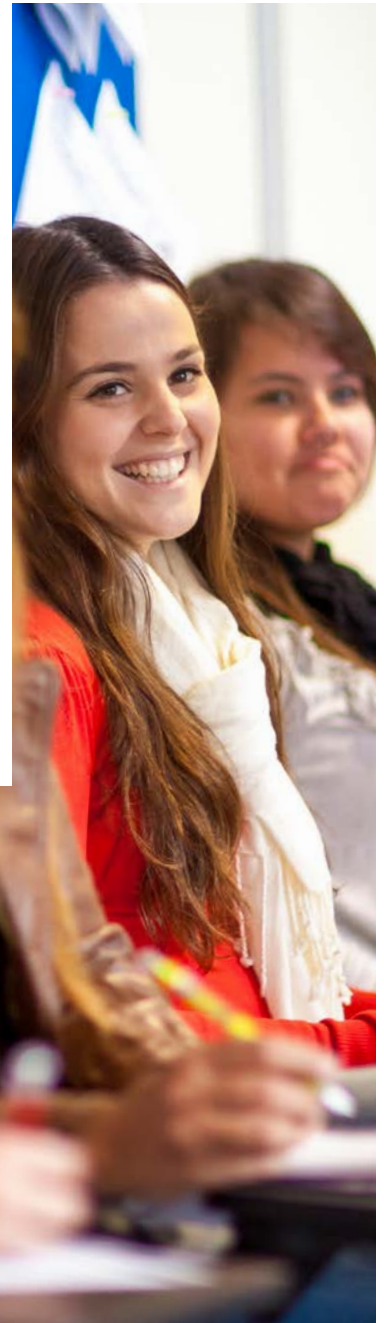
Our programme portfolio aims to meet the needs of all students, whether you want to study General English, to improve your core skills, or need exam preparation classes for exams such as IELTS. You can be sure of the quality of our schools as both are accredited by the British Council, and our London Greenwich school is also inspected by the Independent Schools Inspectorate (ISI). Our courses aim to help you achieve your life ambitions, whether you are studying for work, education or pleasure.





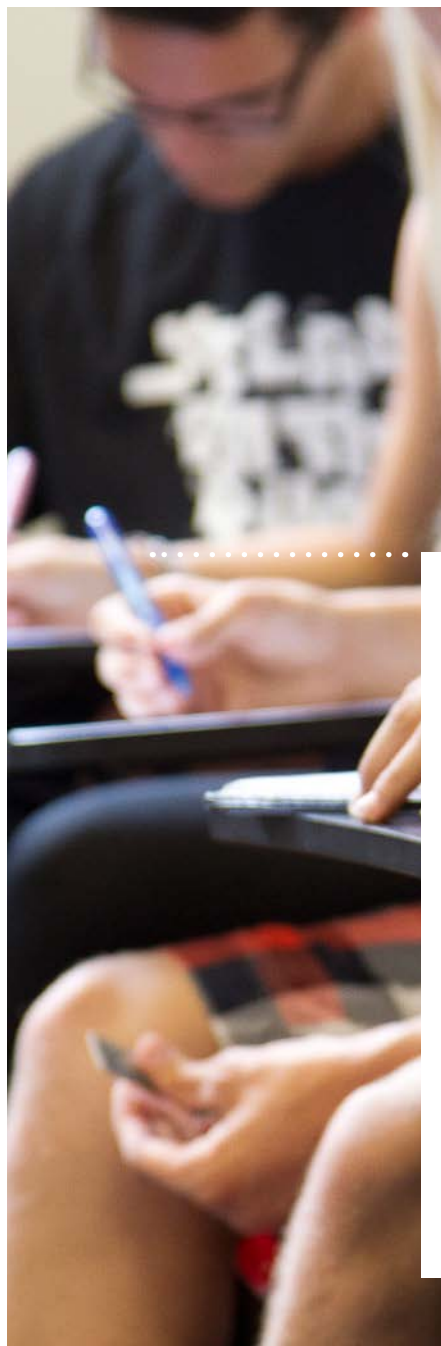
## An international learning experience

We love learning about the customs and traditions of other countries and we will encourage you to have fun and make friends with others in the school and your class. In 2016, we hosted students of more than 60 nationalities, creating a diverse, international learning environment and the opportunity to make friends with those from other countries and continents. The great thing about making international friends is that it allows you to practise using English authentically and is the perfect way to pick up new words and phrases. Both of our schools, in London and Eastbourne, offer an exciting social programme so you can continue to use English during your free time, whether this is on full day excursions, during book clubs, and activities such as bowling, picnics and exploring the local area.



## Communicative teaching – the foundation of our tuition

Our teachers adopt the communicative teaching method and use modern technologies where possible, so that students learn authentically. Focusing on improving your communication allows you to better your everyday English so that you can put this into practice in day-to-day life. We will assess your language ability before you begin your studies to ensure that you are placed in the class that is best suited to your needs. Our teachers will then provide regular progress reports and feedback so that you know which areas require extra focus and practice.



## A student services team that cares

We know how important it is that your educational travel is rewarding, but we also want you to have an enjoyable stay when studying at our English centres. Both our schools have staff who are dedicated to making sure you make the most of your time with us. They will be there to give advice and guidance, answer any individual enquiries about almost everything from places to go, things to see and do and cultural experiences, to where to get SIM cards for your smartphone and practical issues such as healthcare and travel.



# Studying in the UK

We want you to enjoy every aspect of your stay in the UK, which is why our social programme is a key part of the Twin experience. Whether you are studying in London or Eastbourne, our dedicated student services teams will make sure that you always have something to do in your free time.

Both centres boast a weekly social programme which will give you the opportunity to meet other people and go to social events with your new friends. Typical activities we can arrange for students based at our Greenwich school include a trip to the London Eye, going for dinner, seeing a West End show such as The Lion King, a night out in the city, a full day trip to Oxford or Cambridge, as well as waterfront locations such as Brighton and Portsmouth. Our Eastbourne social programme offers activities that are specific to Eastbourne, such as visiting the beach or walking to Beachy Head, the highest chalk sea cliff in Britain. Also, there are a range of activities that are offered by both centres such as trips to the cinema, picnics in the park, bowling, shopping and going for dinner in a variety of local restaurants.

For anyone who wants to develop or improve their English skills, we believe there is no better place than the UK, the home of the English language. In the UK you will be surrounded by English language speakers and have plenty of opportunities to practise your conversational skills in shops, restaurants, and by asking for directions etc. You will also be able to hear the many different accents and dialects spoken in this country.

Each of our schools are in an ideal location. Situated in the Royal Borough of Greenwich, our London centre is a short commute away from the hustle and bustle of Central London, and minutes away from historical attractions such as the Royal Observatory, the Cutty Sark and the National Maritime Museum. Our Eastbourne centre is in the centre of town and close to the train station; with shops, restaurants, the cinema and the beach, which is also within walking distance, it is perfect for those who want to experience a more peaceful aspect of British life.







# Our Schools

At Twin, we want each student to get the most out of their time here, which is why we offer great facilities at both our London and Eastbourne schools, as well as passionate teachers who strive to help you make as much progress as possible.

Our teachers understand that each student has different goals, strengths and needs, and our teaching methods are reflective of this. Lessons are engaging and encourage authentic communication, and most importantly, are focused on the students.



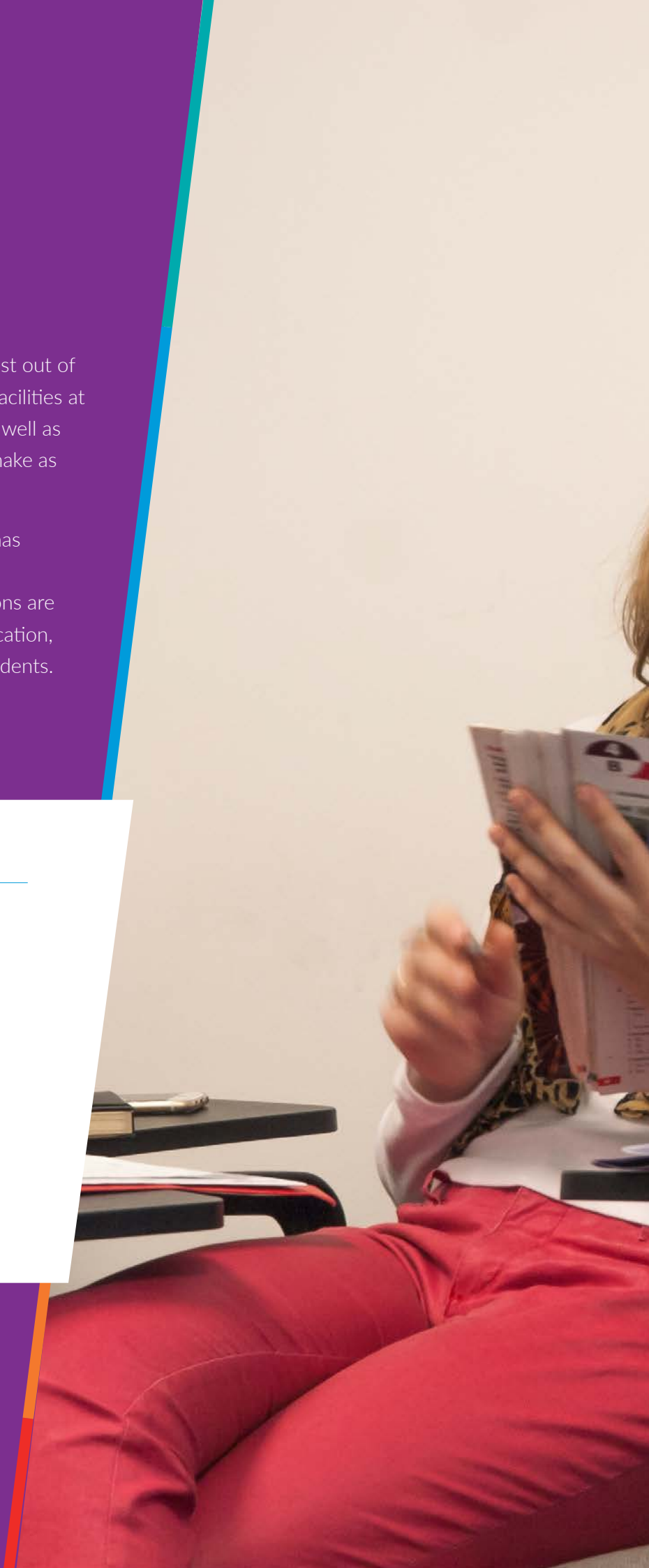
“We offer a high- quality learning experience in a world-famous location at an affordable price.”

**Sarah Morse**, Head of Greenwich and Seasonal Schools

Accredited by the



for the teaching  
of English









## OUR SCHOOLS

# London Greenwich

*Located in the historic Royal Borough of Greenwich, our London school is a state-of-the-art centre with modern facilities.*

For those looking to study English in London, there is no need to look further than Twin. Our Greenwich school offers students everything that they could possibly need; we have modern facilities, a comfortable learning environment, excellent transport links to Central London and a wide range of courses that were created to meet the needs of international students.

Lessons are taught in our fully air-conditioned, bright and modern classrooms; you can socialise in our spacious common areas, and study in our self-study zones where you will also have access to student computers. There is free Wi-Fi throughout the school and an on-site library with thousands of books, so you will be able to educate and entertain yourself outside of lesson time.

### The School

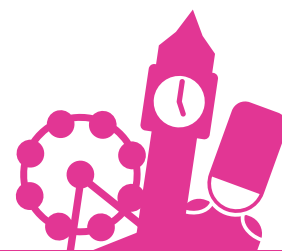
With 20 fully air-conditioned classrooms, plenty of space for socialising and modern teaching technologies, our London school provides students with comfortable surroundings allowing you to have the best learning experience possible. With an extensive range of courses including exam preparation and specialist courses, you are able to choose a course that is best suited to you and your individual needs.

### Our Team

At Twin we have a helpful and highly qualified academic team who are on-hand to answer any questions you may have. Our social programme is co-ordinated by our student services team who will encourage you to socialise with other students, meet new people and enjoy everything that the UK has to offer.

## Why study at Twin London

- Beautiful location in Royal Greenwich
- Easy access to Central London
- Amazing on-site facilities including a gym and swimming pool
- Famous local attractions
- A range of courses available



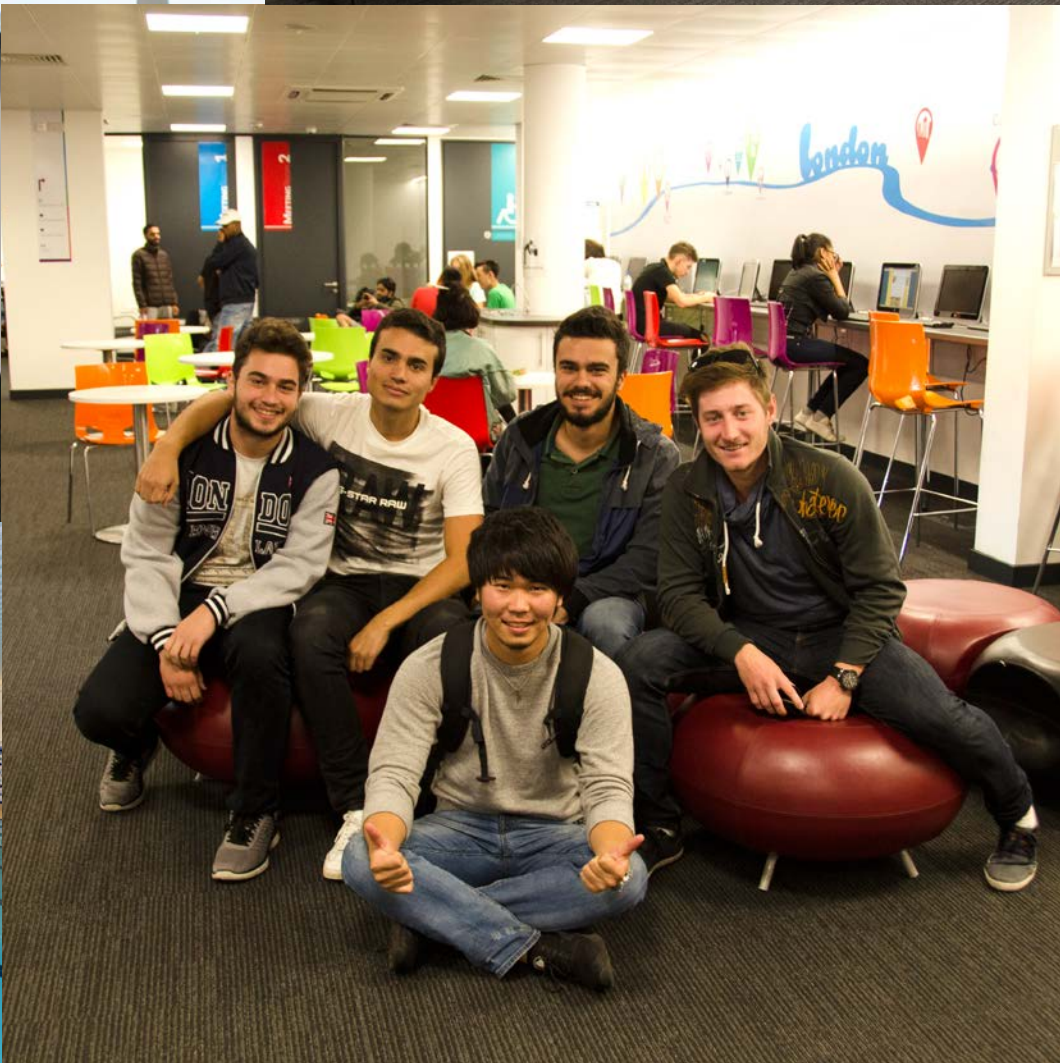
### Exploring London

Every year London is voted as one of the most popular cities in the world, and it is clear to see why. The capital has plenty to offer in terms of culture, attractions, history, nightlife, and restaurants, and we want our students to take full advantage of this. The excellent transport links around our London school make travelling into Central London or around Greenwich incredibly easy, taking just 25 minutes to travel to famous locations such as Trafalgar Square, Piccadilly Circus and Covent Garden.

### Local Attractions

The reason we chose Greenwich as the site of our school is because of the exciting attractions located nearby. The O2 Arena is a short distance away; the music arena is one of the busiest in the world and has hosted performances from the likes of Celine Dion, Justin Bieber and Ed Sheeran. Historical landmarks such as the Royal Observatory, Maritime Museum and Cutty Sark are located in the centre of Greenwich which is less than 15 minutes' walk away.













## OUR SCHOOLS

# Eastbourne

*New school, same high-quality education - if you want a peaceful learning environment, look no further than our Eastbourne school.*

By choosing our Eastbourne school, you will have the chance to study English in what is said to be the sunniest town in the country. Eastbourne has been a tourist attraction for over 100 years and has a wide range of activities that are suited to all ages and tastes. With a long stretch of shingle beach and easy access to the South Downs National Park, Eastbourne has some of the most scenic views in the UK and is perfect for those looking to relax when they are outside of the classroom.

### The School

Our new Eastbourne school is a ten minute walk from the beach and Eastbourne's famous pier. With excellent teachers and great facilities, we offer all students a 21st century learning experience in a traditional English school environment. Eastbourne is the ideal location if you want to focus on your studies, but also spend time relaxing and socialising by the sea.

### Our Team

We have a qualified and passionate staff who will make sure that every aspect of your time with Twin is rewarding and enjoyable. Twin offers high-quality language tuition, homestay hosts and a social programme to ensure that you have the best experience while you are with us. At our Eastbourne school our staff will help you create lasting memories, make new friends, experience British life, and most importantly, develop your English skills in a nurturing environment.

## Why study at Twin Eastbourne

- A sunny seaside town with scenic views and picturesque panoramas
- Great quality of life
- Close to beautiful countryside
- 90 minutes to London by train
- A range of courses available
- Long established English language school



### A Great Location

Said to be the sunniest town in the UK, Eastbourne has mild winters and warm summers, and offers a friendly and relaxed atmosphere to students. The town hosts a wide range of attractions and activities that can be enjoyed year-round. The town centre has four theatres, two cinemas and a highly regarded art gallery, as well as golf courses, tennis courts, bowling alleys and a yachting marina. The town also hosts annual events such as the Aegon International Tennis Tournament, and Eastbourne Airbourne, the largest free air show in the UK.

Our school is just ten minutes' away from the beach and the famous Eastbourne Pier; and with shops, cafés and restaurants within walking distance our school is ideally located. Eastbourne gives you the opportunity to experience a range of leisure activities and cultural activities such as sailing, wind-surfing and visiting museums. The town has great transport links to other towns and cities such as Brighton and Hastings, while London is only 90 minutes away on the train.







# Our Courses and student support

We want you to get the most out of your learning, which is why we offer a range of courses to suit the needs of everyone. Whether you are looking for General English lessons, want exam preparation such as IELTS, or require a specialist or tailor-made programme, we are here to help.

---

## **A range of courses to suit the needs of everyone**

If you want a new approach to your English language learning, studying at Twin offers the perfect opportunity for you to do so, especially if you find that traditional methods that may be used in your home country have not always prepared you for real-life interactions. We love to teach aspects of English that you may have never used before, expanding your vocabulary and using things such as idioms and colloquial language to make your learning more interesting. All of our classes have a strong focus on communication, to help you speak English confidently and clearly. We will also encourage you to use English outside the classroom as much as possible, creating the opportunity to practise authentically and improve your speaking and listening.

## **Student progression**

Throughout your course, your progression will be monitored using personalised assessments and monthly tests to ensure that we can offer extra support in any areas that are difficult for you. We give all of our students an end of course report, which states your current level, as well as a certificate of achievement; this is great for students to show future employers and colleges/universities the level that you have achieved.

## **Twin e-Learning for continued progression**

After your course has come to an end, you can continue to practise to maintain your level of English with our online learning platform, Twin e-Learning. You will have access to the programme throughout your stay and for three months after completing your course. Online learning is a great study support and gives you the opportunity to use English when you are back at home and have less exposure to the language.

## **Creating the right study/life balance**

You may want to focus solely on your studies, with the prospect of significantly improving your English being your ultimate aim. Alternatively, you may come to UK for the whole experience, seeking leisure time and social activities in addition to studying. At Twin, we will try to help you find the right balance between studying and having fun so that you have the most rewarding stay possible. Our student services team are there to help you for the duration of your stay and will encourage you to socialise and attend events on our social programme.

# General English

Our most popular English course for international students

General English remains the most popular course for English language learners of all levels and focuses on improving your core English skills; reading, writing, speaking and listening. The course is available on a short or long term basis and as a part-time programme or afternoon class in our London school. No matter what duration or timetable you choose, you should be able to improve your fluency, accuracy and your confidence using English, so that you are able to communicate more effectively, whether this is orally or in writing.

## Your studies will focus on::

- Speaking and listening
- Pronunciation
- Reading and writing
- Grammar and vocabulary

## Course specification

- Language placement test
- Regular progress monitoring and personalised end of course report
- Access to Twin e-Learning, which continues for three months after the end of the course
- Certificate of Achievement upon completion

## Fast Facts

Age: 16+

English level: A1 – C1

Tuition: 15hrs per week, 20 lessons

Maximum class size: 15

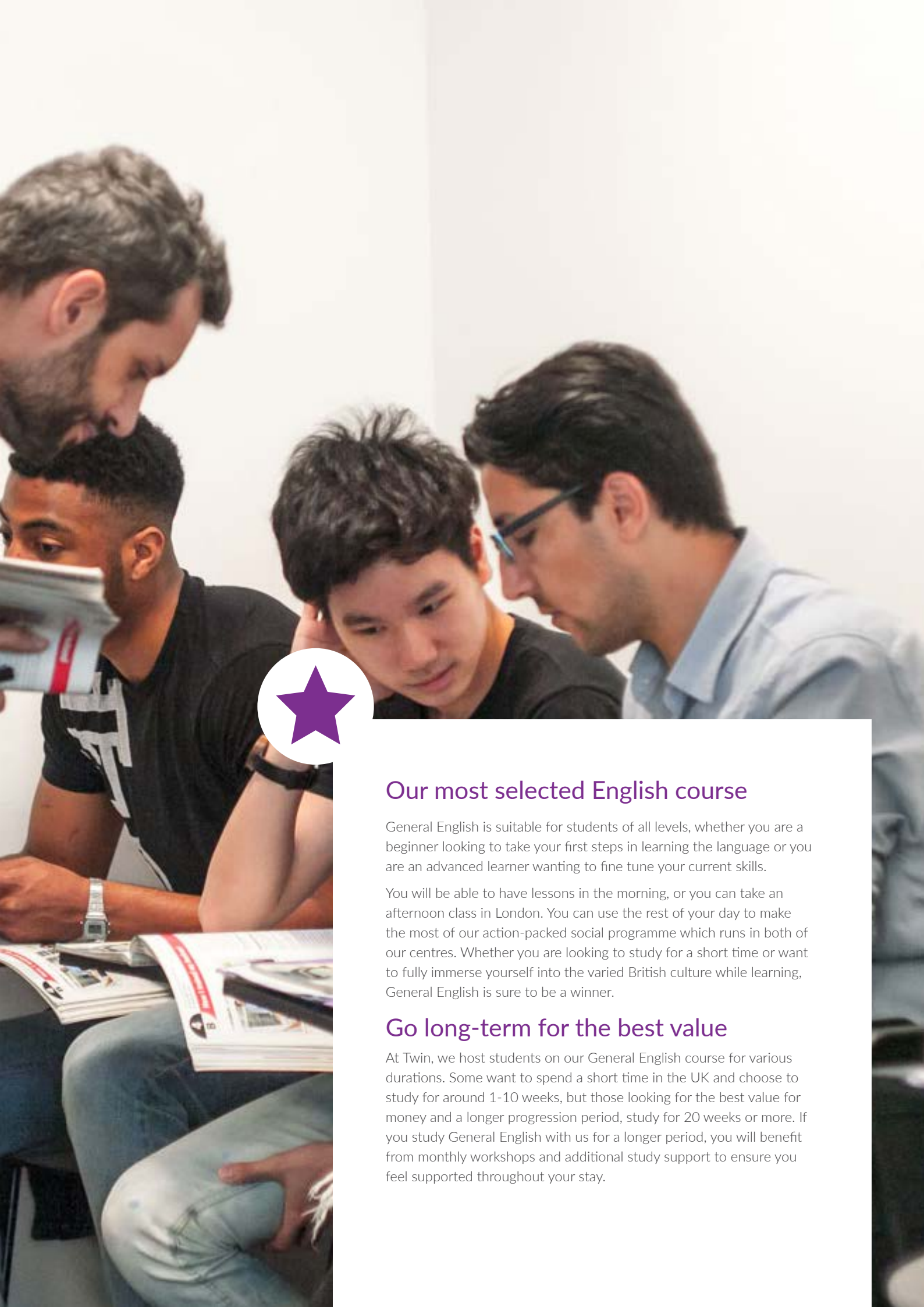
Course duration: 1-50 weeks

Start: Every Monday

Available in: London & Eastbourne







## Our most selected English course

General English is suitable for students of all levels, whether you are a beginner looking to take your first steps in learning the language or you are an advanced learner wanting to fine tune your current skills.

You will be able to have lessons in the morning, or you can take an afternoon class in London. You can use the rest of your day to make the most of our action-packed social programme which runs in both of our centres. Whether you are looking to study for a short time or want to fully immerse yourself into the varied British culture while learning, General English is sure to be a winner.

## Go long-term for the best value

At Twin, we host students on our General English course for various durations. Some want to spend a short time in the UK and choose to study for around 1-10 weeks, but those looking for the best value for money and a longer progression period, study for 20 weeks or more. If you study General English with us for a longer period, you will benefit from monthly workshops and additional study support to ensure you feel supported throughout your stay.

# Intensive English

## Combining General English with focus modules

Now available at both our London and Eastbourne centres, our Intensive English course is perfect if you want additional practice of your core skills in an encouraging and focused environment.

As well as General English classes, our Intensive English course allows you to focus on specific areas of development, such as preparing for the IELTS exam, improving your communication abilities or developing industry specific language.

Flexible enough to meet the needs of everyone, you will attend General English classes in the morning with other international students, allowing you to fully integrate, while two afternoons per week will be spent focusing on the module of your choice. These lessons will be tailored to the needs of the group and cover a variety of topics.

### Course specification

- Language placement test
- Regular progress monitoring and personalised end of course reports
- Access to Twin e-Learning, which continues for three months after the end of the course
- Certificate of Achievement upon completion

### Fast Facts

Age: 16+

English level: A2 - B2

Tuition: 23hrs per week, 29 lessons

Maximum class size: 15

Course duration: 1-50 weeks

Start: Every Monday

Available in: London & Eastbourne





# Our afternoon modules

Choose your Intensive English add-on module or subscribe to one of our modular classes as a stand-alone course\*

## IELTS Preparation

For those who want to work or study in an English-speaking country, you will need to prove your level of English, and the IELTS exam is the perfect way to do this. IELTS is the world's most popular English test for study and migration, and our course attracts ambitious students aiming for the best scores. Combining a General English course with IELTS preparation is a great way to practise your core English skills and prepare for the exam.

To score well on the exam, extensive practice is needed, as is familiarity with the exam format; our course focuses on providing frequent practice of your core language skills to improve fluency, accuracy and confidence. We also offer practice tests so you can focus on the exam technique to ensure you are prepared for the day of the exam. Our Twin e-Learning provides extensive opportunities to self study IELTS techniques to further enhance the work you do in class.

### Fast Facts:

Max class size: 15

Starts: Weekly

Age: 16+

Level: B1 - C1

## Conversation Classes

We have specifically designed a course to help build your confidence with conversations in English. The skills you will learn on this course will enable you to interact comfortably in a range of situations, not only with your fellow classmates but also with other English speakers.

Focusing on communication, our conversation classes include group discussions, role play, and presentations which aim to expand your vocabulary. This course is ideal if you have a great understanding of grammar, but need additional help with your speaking and listening skills.

### Fast Facts:

Max class size: 15

Starts: Weekly

Age: 16+

Level: A1 - B2

## English for work

In many non-English speaking countries, those with the ability to speak English can enjoy higher salaries and have better access to international careers. Here at Twin, we understand that mastering English for the workplace can be challenging, but this course will help you get there.

English for Work aims to improve your professional business skills and build your confidence. You will begin to expand your workplace vocabulary, picking up words and phrases that relate to a workplace environment. Topics include email writing, handling phone calls and attending and conducting meetings.

### Fast Facts:

Max class size: 15

Starts: Weekly

Age: 18+

Level: B1 - C1

## One-to-One

Our One-to-One classes offer many of the benefits of our popular General English course with the added bonus of highly personalised one-to-one tuition. After discussing your personal aims, we will then tailor your lessons to your requirements. This could be anything from finding a job, writing a CV or preparing for interviews to learning industry specific language such as legal, medical or business English. The General English course will build upon your core skills, whilst your 1-2-1 teacher will provide additional support in areas where you most need it.

### Fast Facts:

Starts: Weekly

Age: 16+

Level: A1 - C1

\*Subject to level requirements



*"We are well prepared for the exam because of our practise in class and the teacher makes sure we have all the correct skills, especially for the writing section of the test. "*

**Quentin Guillermet, France**  
IELTS student

#### Available classes

- General English
- IELTS
- Conversation
- English for Work
- Grammar workshop  
(2 hours every Friday)

#### Fast Facts

Age: 16+  
English level: A2 - C1  
Tuition: 29hrs per week, 38 lessons  
Maximum class size: 15  
Course duration: 1-50 weeks  
Start: Every Monday  
Available in: London & Eastbourne



# English Unlimited

Study as much or as little as you like  
with our all-inclusive course\*

Our English Unlimited course is unique in the fact it lets you study what you want and as frequently as you would like. This flexibility allows you to choose courses that you are beneficial to your educational journey and fit around your personal schedule; simply sign up for the classes that you want to attend each week.

With access to a maximum of 29 hours of tuition per week, Monday to Friday, students can take General English classes each morning, where studies will focus on essential language skills such as speaking, listening, writing and grammar. Afternoon classes are focused on your specific needs and your overall language objective; i.e. whether you want to find work in an English speaking country or attend a British university.

The English Unlimited package allows you to receive quality education that you can tailor to your specific requirements – the course is great value for money as you get access to a range of high-quality courses for one fixed cost. By choosing English Unlimited you can save on the cost of your course compared to booking all the courses individually.



# Specialist Courses



Offering a more tailored learning experience, these programmes are for you if you have very specific learning goals, want to study for a longer period of time or need a certain level of English for work\*

## All Specialist courses include:

- Language placement test
- Regular progress monitoring
- Certificate of Achievement upon completion
- Personalised end of course report
- Access to Twin e-Learning, which continues for three months after the end of the course

## English for University

You can improve your English as you prepare for university at either our London Greenwich or Eastbourne school. Our English for University programme has been designed with your needs in mind. During this course you will increase your General English proficiency in all study areas, and we aim to help all students reach the required IELTS level for university entry. You will also study Academic English and develop key study skills such as conducting presentations, note taking, and essay writing. We will also offer advice and assistance in the university application process.

### Fast Facts:

Tuition: 29hrs per week  
Max class size: 15  
Level: B1  
Age: 16+  
Available: London & Eastbourne

## Business English

Ideal for graduates and business professionals, our Business English course allows you to develop your English for the workplace. Our teachers will draw on their wealth of knowledge to teach you everything you need to know to develop your skills. This is an intensive course available to students aged 21 and over, so you can expect mature, independent learners. Also, with a maximum class size of eight, the course allows for a more focused learning environment.

### Fast Facts:

Tuition: 23hrs per week  
Max class size: 8  
Age: 21+  
Level: B1 - C1  
Available: London & Eastbourne

## Parent and Junior English

Our Parent and Junior English programme allows adults and juniors to come to the UK together for 1-8 weeks during June, July and August to improve your English and experience British culture. Adults and juniors will attend separate classes allowing us to tailor lesson content and ensure that it is engaging and educational for all ages groups. Adults will attend our General English classes to improve their core English skills; reading, writing, speaking and listening. Junior students aged 10-15 will attend an English class specifically for students their age where they will follow an exciting syllabus with fun and games which aims to better their spoken and written English.

### Fast Facts:

Tuition: 15hrs per week  
Max class size: 15  
Age: 10+  
Level: A1 - C1  
Available: London, 18/06 to 31/08

## Teacher Development (Closed groups only)

Our Certificate in Methodology and Language Development is a modular course for non-native speakers of English; the lessons are tailored to your individual requirements and are made up of a combination of class based tuition and teacher observation, allowing you to reflect and discuss methodologies and address specific issues you may have when teaching. There is now a greater emphasis on the importance of English for global education, with teachers needing to learn how to deliver effectively courses in the language. This programme offers so much more than standard tuition; it also help provide teachers with the skills to deliver specific subjects in English.

### Fast Facts:

Tuition: 20-30hrs per week  
Max class size: 10  
Age: 21+  
Level: B1 - C1  
Available: London & Eastbourne

\*Subject to level requirements



*"In my class, I learn new English words and my conversation skills are better after just one week in London."*

Lucie Wasserrabová,  
Czech Republic  
Intensive English student

#### Example courses:

- Business English
- Financial English
- Legal English
- Medical English
- General English for juniors
- Trinity exam preparation
- Cambridge exam preparation

#### Fast Facts

Age: 10+

English level: A1 - C1

Tuition: As requested

Maximum class size: 15

Course duration: 1-50 weeks

Start: Every Monday



# Tailor-made Courses

Specially designed for groups to help them achieve specific learning goals

We know that when students come as a group, they often want a programme that is completely tailored to their needs. This is especially true for those studying a specific topic at university or those who are embarking on a new project professionally and need to be able to use English effectively.

Our tailor-made courses offer ultimate flexibility; we will design the programme that best suits the group, with the right balance of study topics and activities. There are many options available for groups opting for our tailor-made programmes, such as English for a specific sector, exam preparation, and junior programmes.

We aim to create a programme that will:

- Meet expectations and educational goals
- Include materials tailored to the group's age and English level
- Be perfectly suited to the group's requirements

For those in groups of ten or more, this is our most popular course as it is designed around them and their needs. It is extremely popular with those looking to enjoy a personalised activity programme, prepare for an exam or develop their English for professional use.

As well as tailoring a course to students, we can also tailor your stay in the UK with arranged days out, walking tours and airport transfers.



# Course information

See our reference table for course specifications and eligibility

- Intensive
- Unlimited
- Preparation
- Groups
- Specialist

## London

Courses	Min age	Available levels	Max class size	Hours per week	Lessons per week
General English	16	A1 - C1	15	15	20
Intensive English	16	A2 - C1	15	23	29
↳ IELTS Preparation	16	B1 - C1	15	6	8
↳ Conversation	16	A1 - B2	15	6	8
↳ English for Work	16	B1 - C1	15	6	8
One-to-One	10	A1 - C1	1	Any	-
English Unlimited	16	B1 - C1	15	29	38
Long-term dual centre (General English)	16	A1 - C1	15	15	20
★ English for University	17	B1 - C1	15	29	38
Business English	21	B1 - C1	8	23	29
Parent and Junior English	10	A1 - C1	15	15	20
★ Teacher Development (closed groups only)	21	B1 - C1	10	Any	-
Tailor-made Courses (closed groups only)	10	A1 - C1	15	Any	-

## Eastbourne

Courses	Min age	Available levels	Max class size	Hours per week	Lessons per week
General English	16	A1 - C1	15	15	20
Intensive English (including IELTS)	16	A2 - C1	15	23	29
One-to one	10	A1 - C1	1	Any	-
Long-term dual centre (General English)	16	A1 - C1	15	15	20
★ English for University	17	B1 - C1	15	29	38
Business English	21	B1 - C1	8	23	29
★ Teacher Development (closed groups only)	21	B1 - C1	10	Any	-
Tailor-made Courses (closed groups only)	10	A1 - C1	15	Any	-

★ To find out more about these courses, please request a course leaflet

# Tailor your stay with our optional extras

Upgrade with a range of additional services for a package to meet your needs

## Accommodation

We have a number of accommodations available to meet the needs of all of our students. In Eastbourne and London we offer homestay accommodation which is provided by Twin or a trusted partner. Also, exclusive to London, we offer residential and flatshare accommodations.

### Homestay

- An affordable accommodation option
- Practise your English conversation skills and learn more about life in the UK
- All hosts are checked and approved to ensure that you enjoy a comfortable living space
- Bed & breakfast, half board and full board available
- Average journey time to school is 45 minutes

### Residential

- Available in London zones 1, 2 and 3
- Perfect if you want independence and flexibility while staying in London
- Available in student houses, hostels and private homes
- Most residences have fully-fitted kitchens
- Many of our residences have en-suite facilities

### Flatshares

- Ideal for long-term students
- Flatshares are great for meeting other Twin students
- Excellent nearby transport links
- Offer a range of facilities to create a comfortable living environment

For your ultimate convenience we also are able to arrange airport transfers.







## INTERSHIP

As well as our English courses we also offer award-winning internships, both paid and unpaid. Our internships are available in a variety of sectors from marketing and PR, to finance, law, and graphic design. If you would like more information about the placements that we offer, please request one of our internships brochures.

## GYM AND SWIM

If you study at our London school, you can add-on a membership to the modern on-site gym, where you will have access to a range of fitness classes, quality apparatus, great facilities, and a 25m swimming pool.

## Excursions & Attractions

Alongside our English lessons we also have a social programme to keep students entertained outside of lessons. We offer multiple optional excursions to different areas of the UK so that our students can experience as much of British culture as possible as well as have the opportunity to make new friends, travel and socialise outside of the classroom.

We also offer discounted admission to some of the country's most loved tourist attractions helping make even more lasting memories.

### Some of our most popular excursions:

- London
- Dover
- Brighton
- Cambridge
- Oxford

### Some of the attractions we arrange:

- The London Eye
- Madame Tussauds
- Kings College, Cambridge
- Royal Pavilion, Brighton
- Dover Castle

For more information  
about our courses,  
please visit:

#### English Courses

[www.englishcentres.co.uk](http://www.englishcentres.co.uk)

#### Internships

[www.twininternships.com](http://www.twininternships.com)

#### Summer Centres

[www.twinsummercentres.com](http://www.twinsummercentres.com)

#### School Group Travel

[www.twingrouptravel.com](http://www.twingrouptravel.com)

Interested in any of our  
other programmes?

Contact us for  
a brochure today...

## Internships



## Summer Centres



Accredited by the  
**BRITISH COUNCIL**  
for the teaching  
of English

**ENGLISH UK**  
member

  
**UKINBOUND**  
MEMBER 2016/17

[englishcentres.co.uk](http://englishcentres.co.uk)



[sales@twinuk.com](mailto:sales@twinuk.com)



+44 (0) 20 8269 5678





# London Greenwich & Eastbourne



2018

PRICES (per person per week)			
1-7 wks	8-11 wks	12-23 wks	24+ wks
£195	£175	£155	£140
£145	£145	£125	£125
£260	£250	£240	£195
£260	£250	£240	£195
£420			
£280	£270	£250	£210
£320	£300	£280	£260
£175 (course only available in summer)			
£45 per hour			
£350			
£350			
Price upon request			
PRICES (per person per week)			
£80			
£75			

- Lesson length - 45 minutes
- Class size - max 15 students

- Full induction and placement test
- Student welfare support
- Free Wi-Fi
- Access to Twin e-Learning
- End of course certificate and report
- Social programme (some events may require a supplement)
- Course books provided in class or for purchase on request

- Any combination of General English (morning or afternoon) and afternoon modules, up to 40 lessons. Lessons to be selected at the beginning of each week.

- 4 weeks minimum duration
- Free IELTS exam included with 12+ week bookings (£150 per test for bookings less than 12 weeks)
- Includes university counselling and application assistance and workshops

Ele	Elementary	A1
PI	Pre-Intermediate	A2
Int	Intermediate	B1
UI	Upper-Intermediate	B2
Adv	Advanced	C1

1 Jan, 30 Mar, 2 Apr, 7, 28 May, 27 Aug,  
24-31 Dec

# English Language Timetable

London Greenwich  
& Eastbourne

+44 (0) 20 8269 5678  
sales@twinuk.com  
englishcentres.co.uk

**Twin**

INDIVIDUAL STUDENT RATES  
2018

LONDON GREENWICH						
Time	Lessons per day	Monday	Tuesday	Wednesday	Thursday	Friday
STANDARD AND INTENSIVE COURSES						
Morning 9:00 - 12:30	4	General English	General English	General English	General English	General English
Afternoon 13:30 - 15:00	2	General English Conversation English for University	General English IELTS Preparation English for Work	General English Conversation English for University	General English IELTS Preparation English for Work	General English General English Workshop English for Uni Workshop
Afternoon 15:30 - 17:00	2					General English
PART-TIME COURSES						
Morning 10:00 - 12:00	2		General English Au Pair English	General English Au Pair English	General English Au Pair English	
Afternoon 13:30 - 17:00	4	Conversation	IELTS Preparation English for Work	Conversation	IELTS Preparation English for Work	
EASTBOURNE						
Time	Lessons per day	Monday	Tuesday	Wednesday	Thursday	Friday
STANDARD AND INTENSIVE COURSES						
Morning 9:00 - 12:30	4	General English	General English	General English	General English	General English
Afternoon 13:30 - 15:00	2	Intensive English Module	Intensive English Module	Intensive English Module	General English Workshop English for Uni Workshop	
Afternoon 15:15 - 16:00	1					
PART-TIME COURSES						
Afternoon 13:30 - 15:00	2	IELTS Preparation	IELTS Preparation	IELTS Preparation		
Afternoon 15:15 - 16:00	1					



# Internship & Training Programmes

London & Eastbourne

+44 (0) 20 8269 5678  
sales@twinuk.com  
twininternships.com



INDIVIDUAL STUDENT RATES  
2018

INTERNSHIP PROGRAMMES - EU / YMS				PRICES
Programme	Duration	Eligibility	Location	Per placement
Taster Internship	1-3 weeks	EU	London/Eastbourne	£450
London Internship	4-26 weeks	EU	London	£600

INTERNSHIP PROGRAMMES - Non-EU				PRICES
Programme	Duration	Eligibility	Location	Per placement
London Internship <sup>1</sup>	4-26 weeks	Non-EU	London	£850
Engineering sponsorship without placement	8-52 weeks	Non-EU	UK wide	£1500
Engineering sponsorship with guaranteed unpaid placement	12-52 weeks	Non-EU	UK wide	£2500

GLOBAL CAREER SKILLS					PRICES
Programme	Duration	Level	Min Age	Location	Per person
English with Employability	2 weeks	Int	16	London/Eastbourne	£1150
English with Business Simulations	2 weeks	Int	16	London/Eastbourne	£1200
Young Entrepreneur	2 weeks	Int	16	London/Eastbourne	£1250



HOSPITALITY TRAINING PROGRAMME (HTP)				PRICES
Programme	Training Duration	English Duration	Eligibility	Per person
Hospitality Training + English for Work	16-52 weeks	1 week	EU	£460
Hospitality Training + English for Work	16-52 weeks	2 weeks	EU	£720
Hospitality Training + English for Work	16-52 weeks	3 weeks	EU	£915
Hospitality Training + English for Work	16-52 weeks	4 weeks	EU	£965
Extra weeks of English courses	Supplement	1 week	EU	£175pw

## Internship fees include:

- Full induction
- Placement matched to your career objectives
- Access to Twin's Social Programme
- Twin Support and access to all facilities for programme duration

## Engineering Sponsorship fees include:

- Full induction
- Ongoing programme monitoring
- Two nights accommodation in London
- Access to Twin's e-Learning
- Certificate of sponsorship
- Access to Twin's Social Programme
- Full support and compliance package

## Global Career Skills fees include:

- 60h tuition (30h tuition + 30h work experience for eligible Young Entrepreneur)
- Full board homestay accommodation
- Travelcard zone 1-4 (or Bus pass for Eastbourne)
- Access to Twin's e-Learning
- Access to Twin's Social Programme
- End of course certificate of achievement

## HTP + English for Work fees include:

- Induction and guide to UK living
- 30 English lessons per week
- Support throughout placement
- Optional Hospitality Training placement
- End of course certificate and report

## Internship Programmes key facts

- A CV with relevant education or experience is required for London Internships
- Taster internship students should expect general work duties at placement
- Intermediate level of English is required at the start of most placements
- Some fields may have a specified minimum duration

<sup>1</sup> Non-EU London Internship: Price does not include any visa related fees. More information can be found in the programme flyer  
All prices are correct at the time of print and are subject to change

# Junior Summer Centres

London, Eastbourne & the UK

+44 (0) 20 8269 5678  
sales@twinuk.com  
englishcentres.co.uk



INDIVIDUAL STUDENT RATES  
2018

SUMMER CENTRES					PRICES (per person per week)
Centre	Dates	Arrival Day	Age Range	Room Type	
RESIDENTIAL CENTRES					
Chichester	02/07-13/08	Monday	8-17	Single en-suite/standard Twin en-suite/standard	£688
Leamington Spa	04/07-15/08	Wednesday	10-18 <sup>1</sup>	Single en-suite	£728
Eastbourne	10/06-26/08	Sunday	12-17	Double & dorm en-suite	£789
HOMESTAY CENTRES					
Eastbourne	10/06-26/08	Sunday	12-17	Homestay	£787
Eltham	03/07-14/08	Tuesday	12-18 <sup>1</sup>	Homestay	£737
AIRPORT TRANSFERS (single transfer per person)					
Airport	Chichester	Eastbourne	Eltham	Leamington Spa	
London Heathrow	£160	£180	£140	£190	
London Gatwick	£140	£145	£150	£220	
London Stansted	N/A	£210	£140	N/A	
London Luton	£230	£210	£160	£160	
Southampton	£150	N/A	N/A	N/A	
Birmingham	N/A	N/A	N/A	£160	
East Midlands	N/A	N/A	N/A	£150	

## Standard 2 week programme (14 nights) fees include:

- 30 hours language tuition
- Full board accommodation (3 meals per day)
- One full & one half day excursions per week
- Entrances to famous attractions
- Full programme of activities and sports
- Travelcard for London centres

## Standard 2 week programme fees do not include:

- Insurance
- Optional activities or excursions
- Special dietary requirements
- Supplement for arrival/departure during unsociable hours
- Airport transfers

## Airport transfers key facts:

- Prices are for a single airport transfer and include chaperone fee
- If flights are delayed waiting time will be charged as a supplement of £30.00

<sup>1</sup> 18 year olds will only be accepted as part to a group and will have lessons/activities with those aged 16+



# Accommodation & Extras

London Greenwich & Eastbourne

+44 (0) 20 8269 5678  
sales@twinuk.com  
twinuk.com

**Twin**

INDIVIDUAL STUDENT RATES  
2018

HOMESTAY ACCOMMODATION		PRICES (per person per week)		
Centre	Location	B&B	Half board	Full board
Single room				
London	Zone 3/4	£150	£170	£190
Eastbourne	South Coast	N/A	£140	£160
Twin room				
London	Zone 3/4	£130	£150	£170
Eastbourne	South Coast	N/A	£120	£135

FLATSHARE ACCOMMODATION				PRICES (per person per week)	
Location	Zone	Bathroom	Available	Single room	Twin room
Lewisham	Zone 2	Shared	All year round	£190	£160

RESIDENTIAL ACCOMMODATION				PRICES (pppw)
Location	Zone	Type	Available	
Single room				
Acton	Zone 2	En-suite / Studio	All year round	£280 / £322
Aldgate	Zone 1	En-suite / Studio	All year round	£295 / £310
Bethnal Green	Zone 2	Shared	All year round	£285 <sup>1</sup>
Greenwich	Zone 2	Studio	All year round	£295
Islington	Zone 1	En-suite	All year round	£295
King's Cross	Zone 1	En-suite	July - September	£275
Southwark	Zone 1	En-suite	July - August	£275
Stratford	Zone 2	En-suite	All year round	£280
Tooting	Zone 3	Shared / En-suite	All year round	£210 / £230
Willesden	Zone 2	Studio	All year round	£295 <sup>2</sup>
Twin room				
Bethnal Green	Zone 2	Shared	All year round	£190 <sup>1</sup>
Greenwich	Zone 2	Studio	All year round	£165
Holborn	Zone 1	En-suite	April - August	£190
Willesden	Zone 2	En-suite	All year round	£175 <sup>2</sup>

ADDITIONAL FEES	PRICES
Additional Programme Fees	per person
Registration fee (required for all bookings)	£50
Residence booking fee	£50
CAS form	£20
IELTS exam	£150
Gym membership (one month membership)	£45
Additional Accommodation Fees	per person
Gluten free diet	£3.50 per night
Vegetarian or vegan/lactose free diet	£3.50 per night
Residence bedding pack (if available)	£15
Late arrivals & departures (for flights between 22:00 & 05:00)	£20

TRANSFERS		
Airport / Train station	London	Eastbourne
Heathrow airport	£110	£155
Gatwick airport	£100	£120
Stansted airport	£100	£185
Luton airport	£105	£185
St Pancras / Victoria stations	£75	£155

## Accommodation key facts:

- Wi-Fi is not guaranteed in homestay
- Twin rooms can only be booked by students travelling together, they must arrive and depart on the same day (excluding Bethnal Green residence)
- Flatshare and Residential accommodation require a £100 refundable damage deposit
- For arrivals taking place on a weekday, hosts will only be available after 7pm
- The average travel time between homestay and school is 45 minutes by public transport
- Students under 16 years of age must be accompanied by a group leader between the school and meeting point

<sup>1</sup> For bookings over 20 weeks: -£20pppw

<sup>2</sup> High season (June - August): +£50pppw

<sup>3</sup> For booking over 4 weeks: +£50pppw

All prices are correct at the time of print and are subject to change

v180130